



PORTION GUIDE

ALL THE SHIMMER
OF THE GALAXY



IMAGINE - CREATE - REPEAT

LUNARDUST



You have taken your first steps
in the creative world of Mica
Powders.

This gorgeous set of 27 dazzling
colors will definitely make your
creations brighter!

Have fun and let your imagination
go wild with all the creative
ideas you can implement with our
mica powders!

You will find in this guide helpful
tips and tricks to unleash your
imagination.

The recommended mica powder
portions are great building
blocks to fully take advantage
of the vibrante and intense
colors in this set.



LUNARDUST 27 COLOR MICA POWDER



Mica is a group of silicate minerals which can be ground down into a sparkling powder for use in beauty products. Mica is one of the most important mineral ingredients in cosmetics, used widely in art and crafts to add shimmer and sparkle. Because it's naturally produced it's a particularly well-loved ingredient among organic and natural beauty brands, and is safe to use on almost all skin types with no side effects.

Throughout the ages, mica powders have been used for various purposes, including decorations. Powdered mica glitter is used to decorate traditional water clay pots in India, Pakistan and Bangladesh. Mica powder is also used as a decoration in traditional Japanese woodblock printmaking, as when applied to wet ink and allowed to dry it sparkles and reflects light.

LUNARDUST Mica Powders are:

- o FDA Approved
- o Non-Toxic
- o Vegan
- o Naturally produced
- o Cosmetic Grade



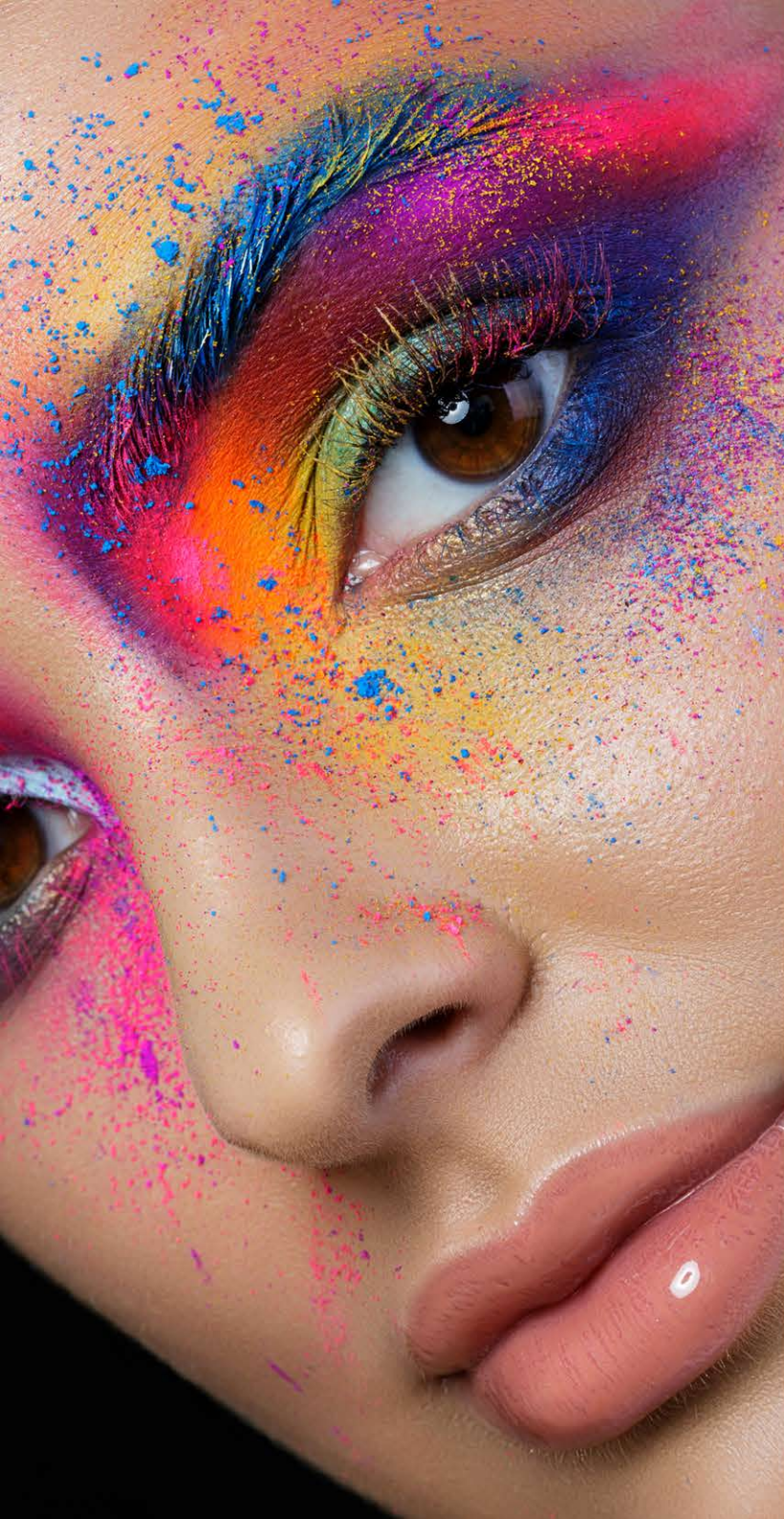
SOAP – BATH BOMBS - SLIME



APPLICATION	RECOMMENDED PIGMENT PORTION (%) IN THE RECIPE *
COLD PROCESS SOAP	from 5 to 10%
MELT & POUR, LIQUID SOAP	from 2.5 to 5%
BATH BOMBS	from 5 to 10%
SLIME	from 2,5 to 5%

Bath Bombs: POLYSORBATE 80 IN BATH BOMBS IS A GAME CHANGER. It will disperse your mica powder (or other colorants) into the water creating a more vibrant color and it will prevent color from sticking to your bathtub and skin.

* The greater the pigment portion added to the total recipe, the more saturated the final color will be



COSMETICS

SAFE & PURE – Lunardust mica powder is a natural dust made from the mica mineral, often used in makeup foundations. Our 27 colors, FDA approved, non-toxic, vegan, safe to use on skin, face, lips and eye lids.

APPLICATION	RECOMMENDED PIGMENT PORTION (%) IN THE RECIPE*
LIPSTICKS, LIP GLOSS	from 10 to 20%
EYESHADOWS	from 10 to 40%
BLUSHER	from 2 to 10%
FACE COLD CREAM	from 2 to 5%
NAIL POLISH, UV POLISH GEL	from 2 to 20%
HAIR SPARY, SHAMPOO,	from 0.1 to 10%
BODY LOTION & CREAM	from 1 to 10%

Eyeshadow:

If you want to make more natural eyeshadows you can use glycerin or jojoba oil (or some other oil) as a binder. However, If you use glycerin be aware that the eyeshadows will not last as long. They may start molding within a couple months. To prevent this you would need to add couple drops of a preservative.

Nail Polish:

For a matte finish, and some cornstarch to the color/base and shake well. 4-6 pea-sized scoops will be needed.

* The greater the pigment portion added to the total recipe, the more saturated the final color will be



GRAPHIC ARTS



Extraordinary pearl and metallic inks can be easily prepared by the incorporation of our LUNARDUST mica powder pigments into the ink.

Since our micas are very fine particle pigments (10-60µm) non-toxic and inert, they can be mixed into virtually any viscous, transparent medium and applied to any surface.

APPLICATION	RECOMMENDED PIGMENT PORTION (%) IN TOTAL SOLUTION*
GRAVURE INKS	from 5 to 15%
SCREEN INKS	from 10 to 30%
FLEXOGRAPHIC INKS	from 15 to 25%
OFFSET INKS	from 5 to 10%

* The greater the pigment portion added to the total recipe, the more saturated the final color will be



COATING & PAINTS



APPLICATION	RECOMMENDED PIGMENT PORTION (%) IN TOTAL SOLUTION*
EPOXY RESIN	from 2 to 4%
AUTOMOBILE SURFACE PAINTS	from 5 to 15%
ELECTRIC APPLIANCES PAINTS	from 4 to 10%
INNER & OUTER WALL PAINTS	from 10 to 20%
BICYCLE PAINTS	from 5 to 12%
FURNITURE LACQUER	from 5 to 20%
MOBILE CASES COATINGS	from 5 to 10%
COATING POWDERS	from 1 to 5%

* The greater the pigment portion added to the total recipe, the more saturated the final color will be

"Be brave enough to live life creatively. The creative place where no one else has ever been."
– Alan Alda

LUNARDUST

www.lunardust.ca

